

# Data Crunchers

The first slide will ask you for your school, team and team members. 1 person should submit answers for the team. Once the section gets to 0:00, the test moves on but DOES record the answers you have clicked. Part of this test will be on paper - has your teacher given you your answer sheet?

# Open Ended Question

Please list your School Name and team member names. Don't forget to hit submit to record your answers before the timer gets to 0:00.

# Quiz

## Section 1

What metric unit measures length?

- Celsius
- Liter
- Milligram
- Kilometer

What metric unit measures Volume?

- Celsius
- Liter
- Milligram
- Kilometer

You are asked to measure how wide your computer screen is. What is the BEST unit for this?

- cm
- kg
- m
- ml

You are asked to measure how much you weigh. What is the BEST unit for this?

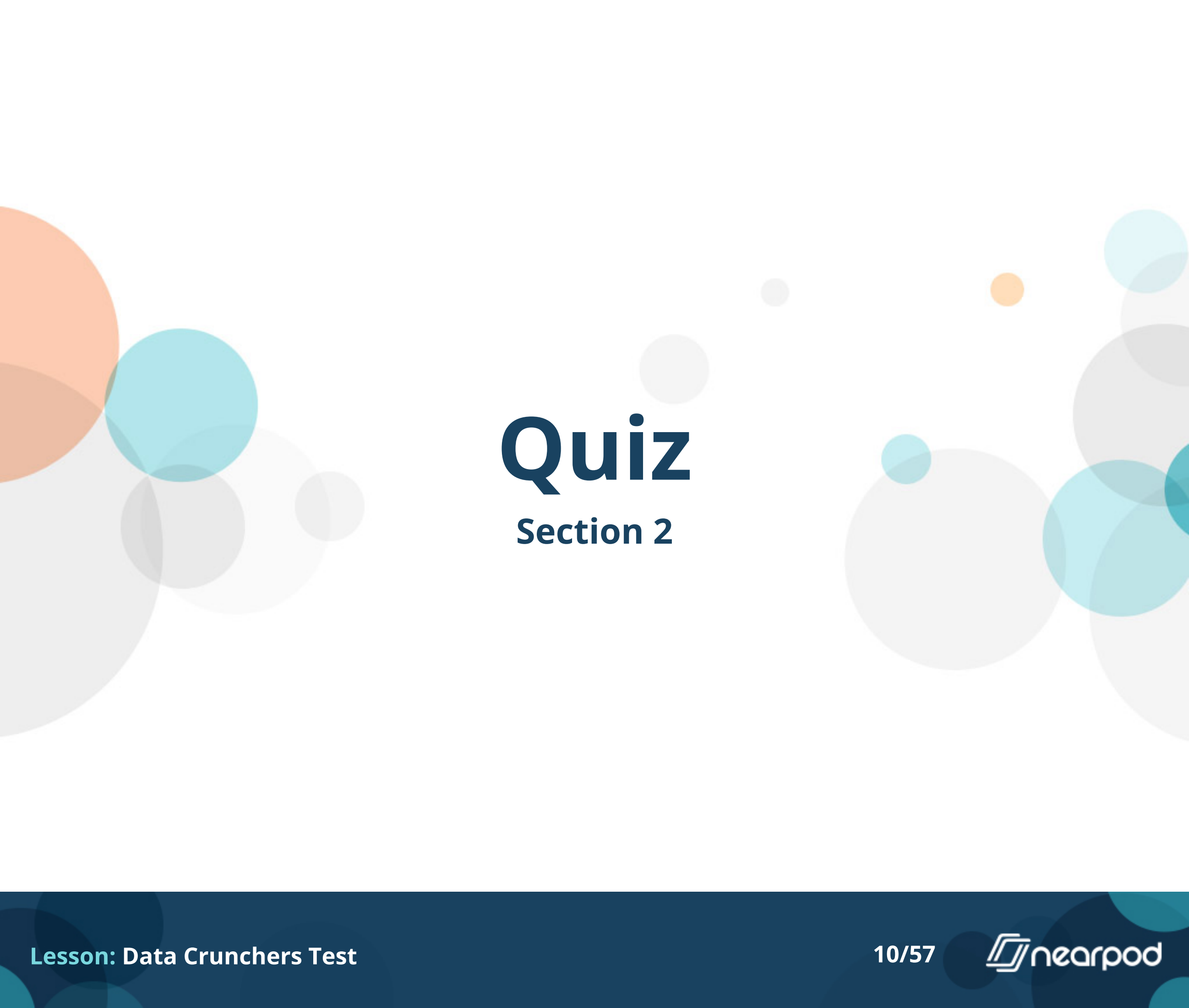
- cm
- kg
- m
- ml





How much liquid is in this graduated cylinder? You can click the picture to make it bigger

- 74g
- 74ml
- 78g
- 78ml



# Quiz

## Section 2

Day	Height (cm)	Temperature (degrees C)
1	1	20
2	2	20.6
3	3.5	22.8
4	3.5	26.1
5	4.5	26.5
8	7	25
9	8	21.1
10	8.5	24.4
11	8.5	22.8
12	9	21.7

Mr. Aaron's students collected this data while watching a tree seedling grow over several days. You can click the picture to make it bigger. The students did not collect data over the weekend, but based on the data, what do you predict the measurement would have been on Day 6?

- 4.0cm
- 4.5cm
- 6.0cm
- 7.0cm

Day	Height (cm)	Temperature (degrees C)
1	1	20
2	2	20.6
3	3.5	22.8
4	3.5	26.1
5	4.5	26.5
8	7	25
9	8	21.1
10	8.5	24.4
11	8.5	22.8
12	9	21.7

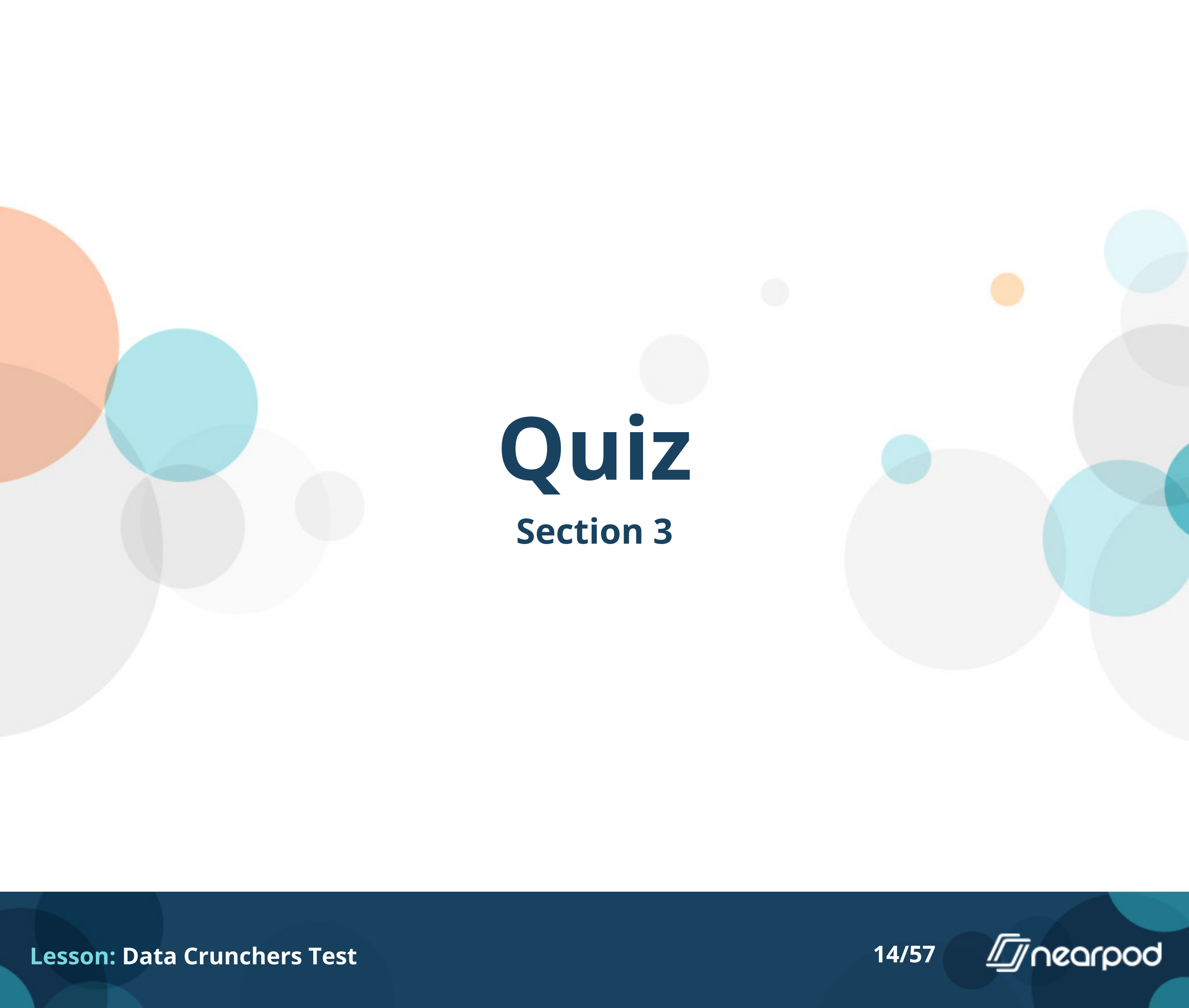
**Did the plant grow more between Days 1 & 4 or Days 5 & 9?**

- Days 1 & 4
- Days 5 & 9

Day	Height (cm)	Temperature (degrees C)
1	1	20
2	2	20.6
3	3.5	22.8
4	3.5	26.1
5	4.5	26.5
8	7	25
9	8	21.1
10	8.5	24.4
11	8.5	22.8
12	9	21.7

**Which of the following statements is TRUE based on the data?**

- The temperature increased every day during the experiment
- It was 5 degrees colder on Day 8 than on Day 1
- Day 5 was the hottest day during the experiment
- It was hotter on Day 3 than on Day 10



# Quiz

## Section 3

Activity	Number of students
football	39
volleyball	34
soccer	51
gymnastics	28
music	25
baseball	21
dance	17
martial arts	20

**This table shows the number of students who participate in different activities at West Creek Elementary School. Liv wants to show this information in a bar graph. Which scale is the most reasonable for her to use?**

- A scale from 0 to 40 with an interval of 2
- A scale from 0 to 50 with an interval of 5
- A scale from 0 to 60 with an interval of 10
- A scale from 0 to 100 with an interval of 25

Activity	Number of students
football	39
volleyball	34
soccer	51
gymnastics	28
music	25
baseball	21
dance	17
martial arts	20

**Which of the following statements is true based on this data?**

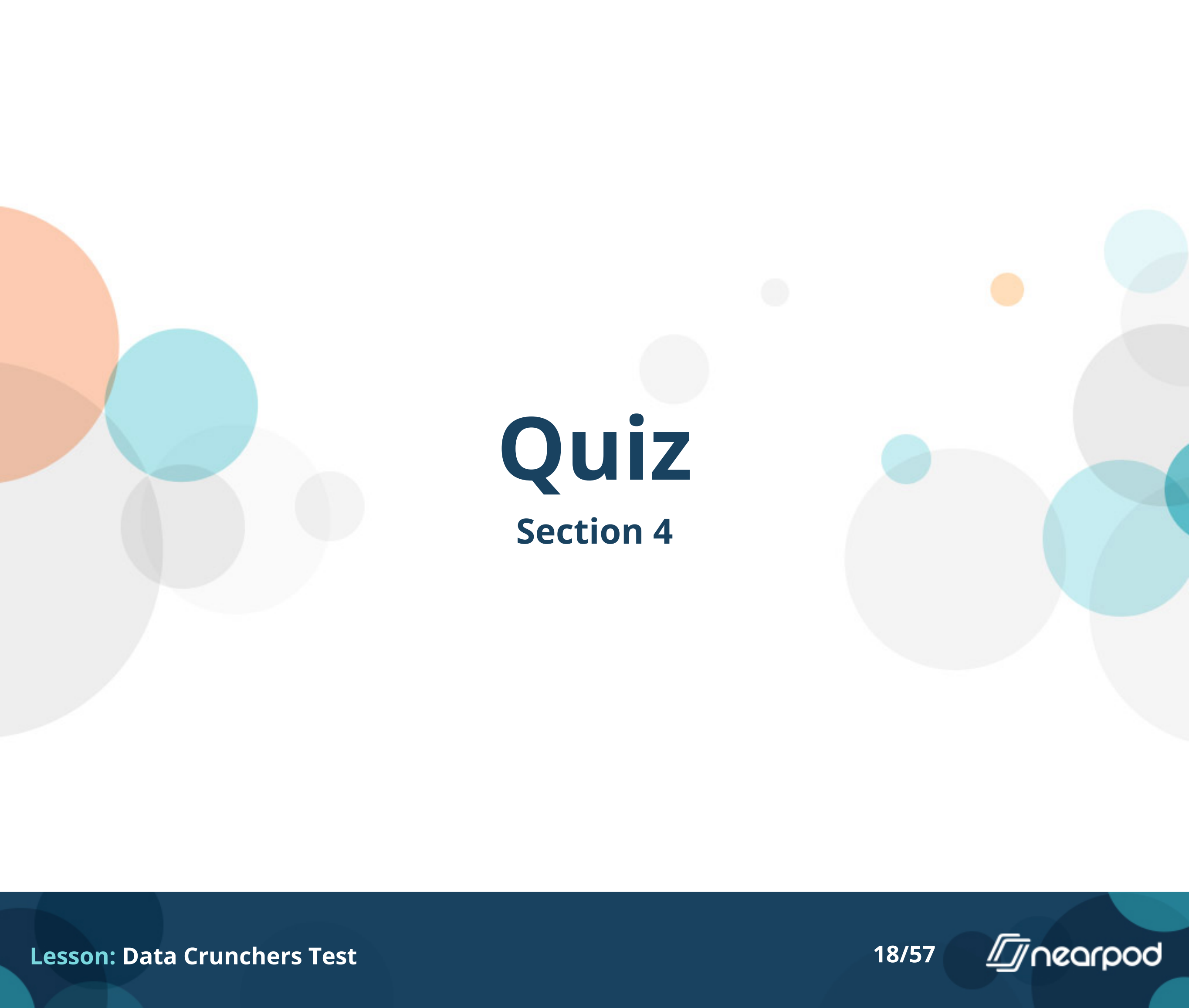
- More students like music than any other activity
- Baseball is the least popular activity
- More than twice as many people like soccer compared to martial arts
- Half as many people like volleyball compared to dance



Activity	Number of students
football	39
volleyball	34
soccer	51
gymnastics	28
music	25
baseball	21
dance	17
martial arts	20

**What kind of graph would be the best way to show this data set?**

- bar graph
- pie chart
- line graph
- scatter plot



# Quiz

## Section 4



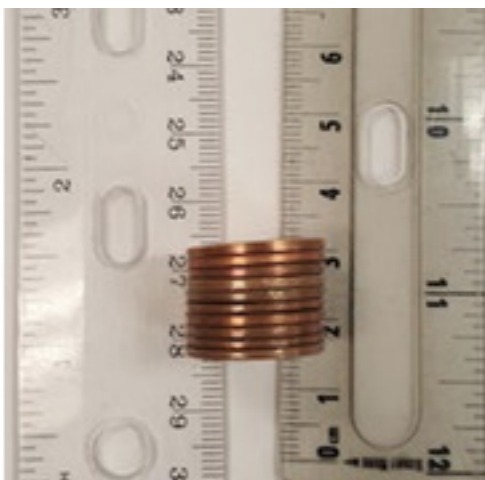
Allie and Sophia are super-excited, they both found watermelons that are the exact same size! Allie eats  $\frac{2}{3}$  of her watermelon, Sophia eats  $\frac{5}{8}$  of her watermelon. Who ate more?

- Allie
- Sophia



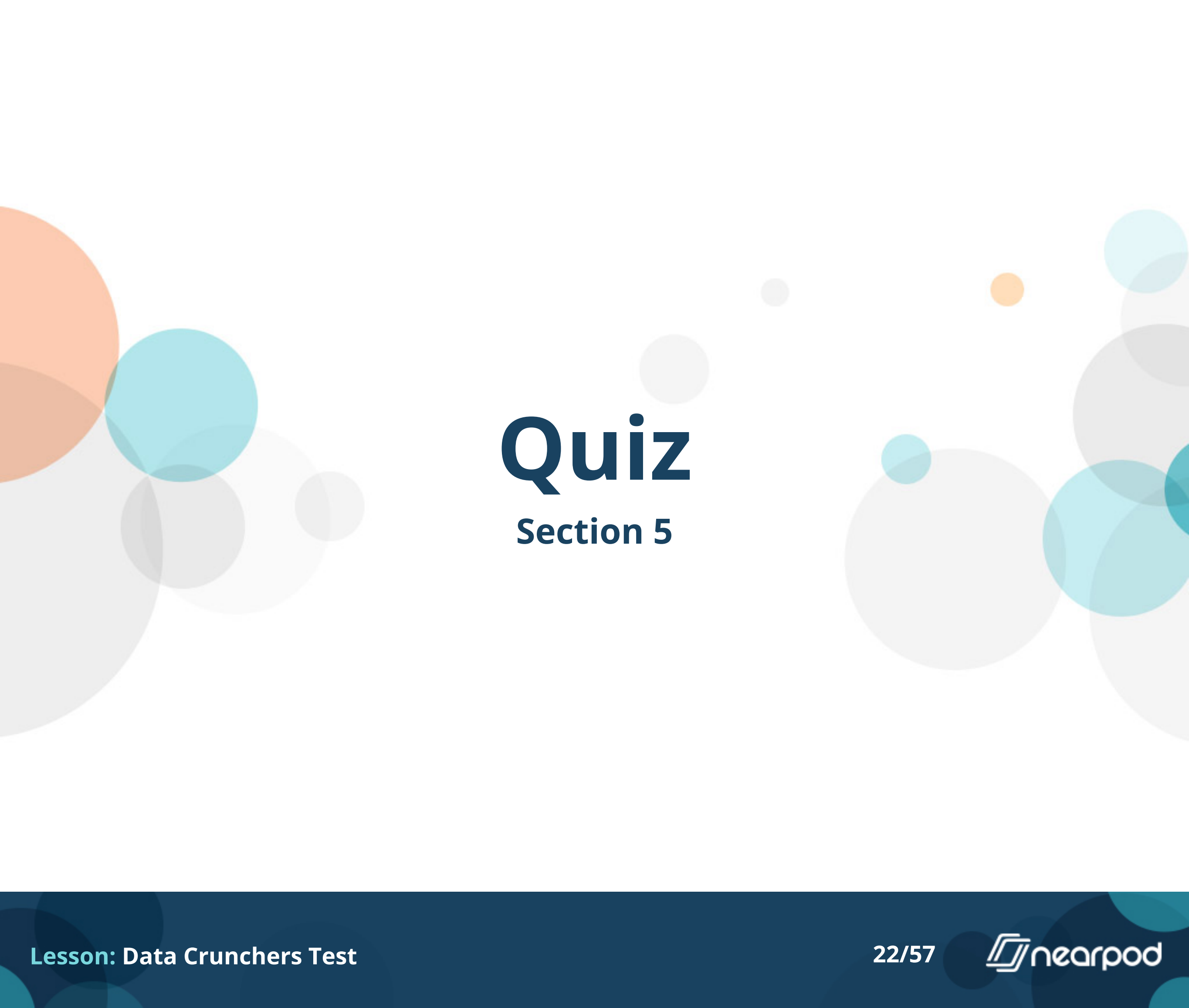
**Rebecca has 24 cupcakes. She has frosted  $\frac{3}{4}$  of them. How many does she have left to frost?**

- 8
- 12
- 16
- 18



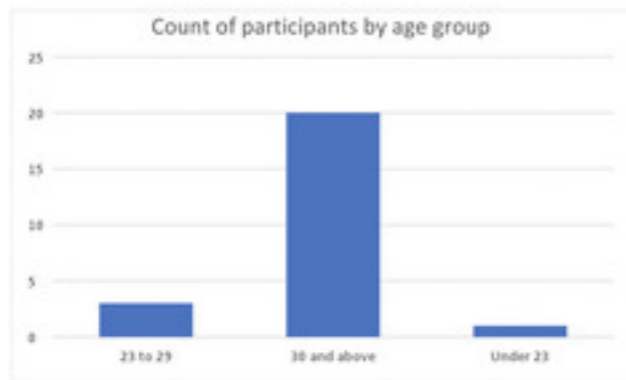
10 pennies are about 2 cm tall. How thick is 1 penny?

- 2mm
- 5mm
- 1mm
- 20mm



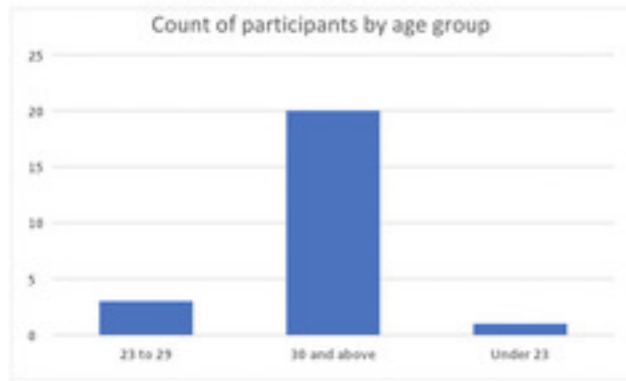
# Quiz

## Section 5



This set of data shows participants in a taste test survey. How many total people participated in this taste test?

- 14
- 21
- 24
- 31



Each person was asked to taste a new flavor of cheese.  $\frac{1}{3}$  of the people liked the cheese.  $\frac{4}{6}$  of the people did not like the cheese. Did more people like or dislike the cheese?

- Liked it
- Disliked it



Nutrient	# of Grams
Fat	2.3
Carbohydrates	25.3
Protein	6.1

**For each of the following indicate what type of graph is best.**

- Bar Graph
- Line Graph
- Pie Chart

Animal	Speed (km/hour)
Cheetah	120
Free-tailed bat	96.6
Pronghorn	88.5
Springbok	88
Wildebeest	80.5
Blackbuck	80
Greyhound	74
African wild dog	71
Kangaroo	71
Horse	70.8

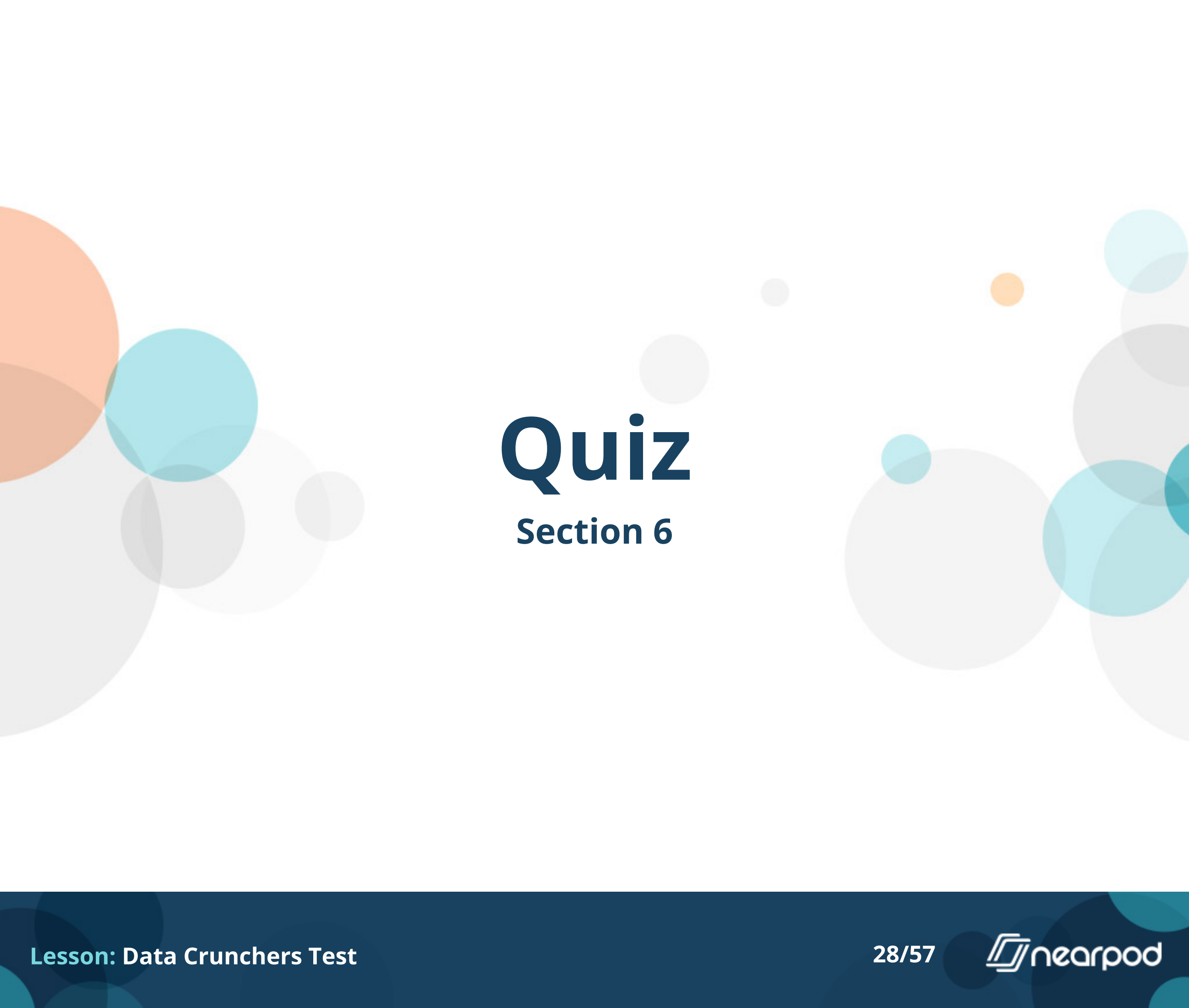
**For each of the following indicate what type of graph is best.**

- Bar Graph
- Line Graph
- Pie Chart

Subject	Percentage of Students
Math	8
Science	18
Language Arts	4
Social Studies	11
Music	24
PE	21
Art	14

**For each of the following indicate what type of graph is best.**

- Bar Graph
- Line Graph
- Pie Chart



# Quiz

## Section 6



Yao Ming, the tallest ever NBA player, formerly of the Houston Rockets is 229 centimeters tall. Muggsy Bogues, the shortest ever NBA player, formerly of the Charlotte Hornets is 160 centimeters tall. A basketball court is 28 meters long. How many Yao Mings would you have to lay head to toe to go the length of the basketball court? (Round up to the next highest whole number)

- 10
- 11
- 12
- 13



Yao Ming, the tallest ever NBA player, formerly of the Houston Rockets is 229 centimeters tall. Muggsy Bogues, the shortest ever NBA player, formerly of the Charlotte Hornets is 160 centimeters tall. A basketball court is 28 meters long. How much taller is Yao Ming than Muggsy Bogues in meters?

- .069m
- .69m
- 6.9m
- 69m

# Quiz

## Section 7



Renu asked everyone in her neighborhood if they liked Coke or Pepsi better. Is that Categorical, Numerical data?

- Categorical
- Numerical





Alexis asked all her calssmates what their favorite movie was.  
Is that Categorical, Numerical data?

- Categorical
- Numerical



Alonzo recorded everyone in his class's height. Is that Categorical, Numerical data?

- Categorical
- Numerical



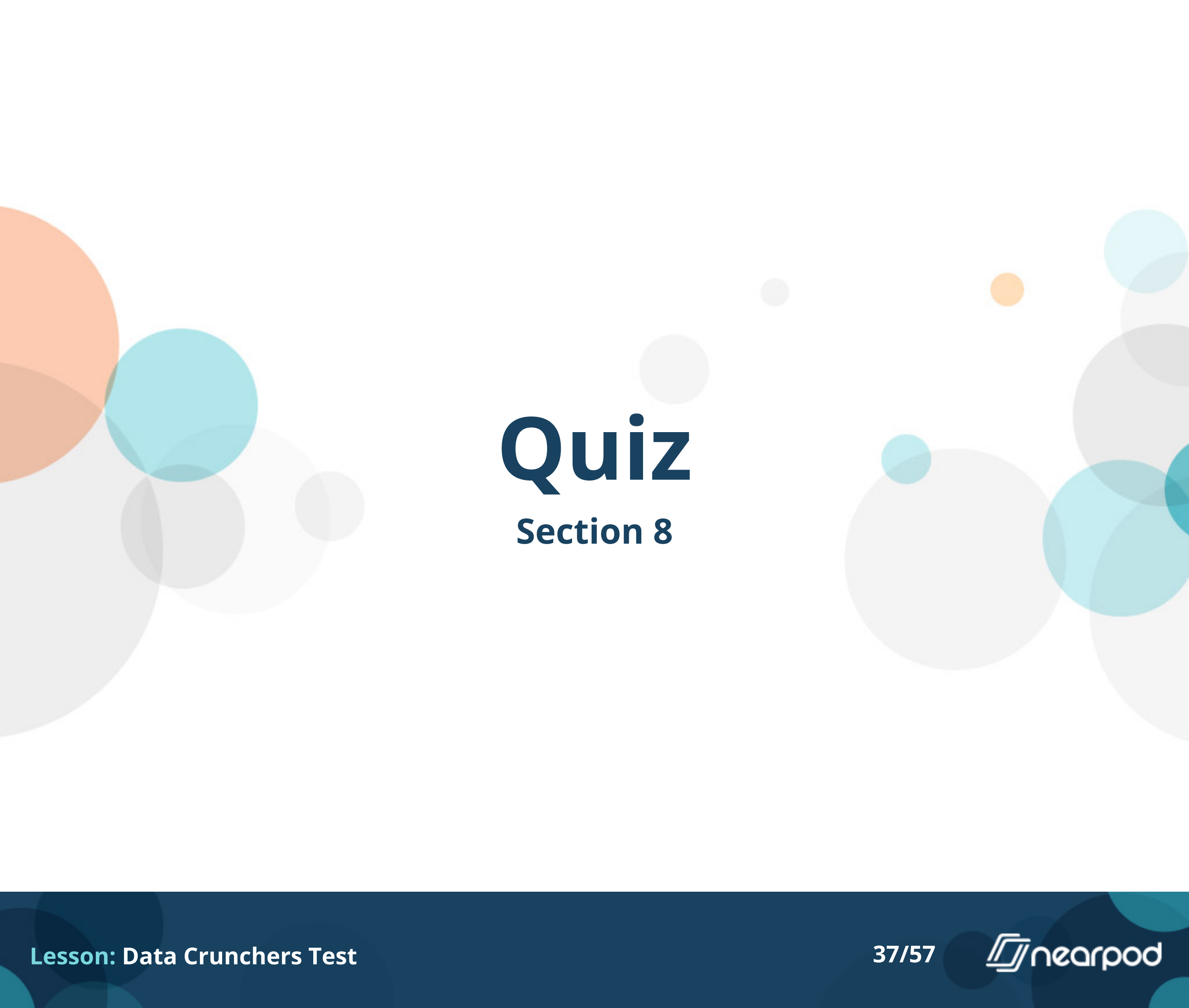
Akan graphed where the people in his neighborhood were born.  
Is that Categorical, Numerical data?

- Categorical
- Numerical



Viktor flipped a quarter 100 times and recorded whether it was heads or tails. Is that Categorical, Numerical data?

- Categorical
- Numerical



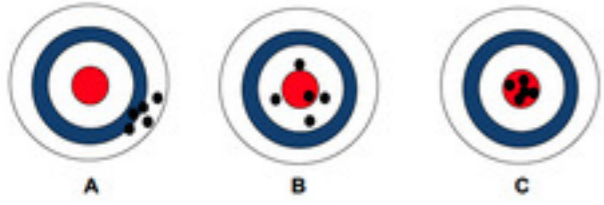
# Quiz

## Section 8



Which bullseye has high accuracy and low precision?

- A
- B
- C



**Which bullseye has low accuracy & high precision?**

- A
- B
- C



**Which bullseye has high accuracy & high precision?**

- A
- B
- C



**Who is more accurate when measuring a book that has a true length of 17.0 cm?**

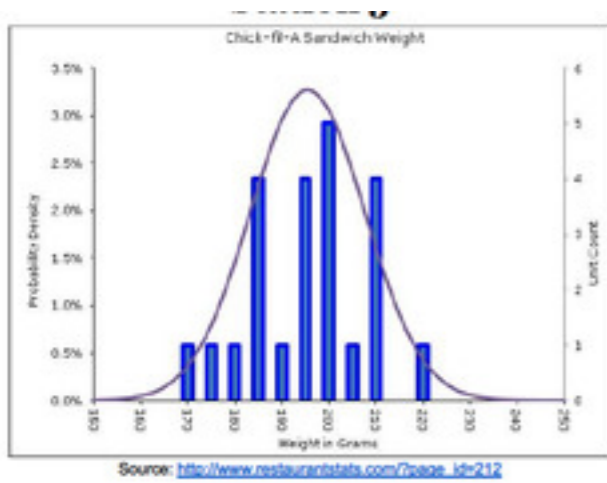
- Susan: 17.0 cm, 16.0 cm, 18.0 cm, 15.0 cm
- Amy: 15.5 cm, 15.0 cm, 15.2 cm, 15.3 cm

**Which data set is the most precise?**

- 18.2cm , 18.4cm , 18.3cm
- 17.9cm , 18.3cm , 18.8cm
- 16.8cm , 17.2cm , 19.4cm

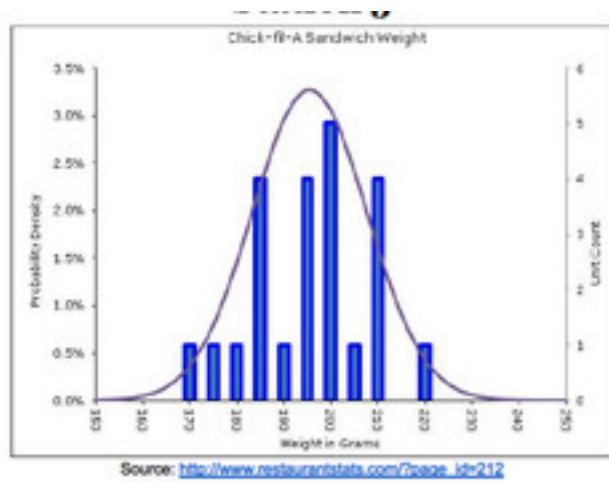
# Quiz

## Section 9



Aaron weighed each of the Chick-fil-a sandwiches that he ate this year before he ate them. He graphed how much each one weighed on the graph above. How many sandwiches did he eat in total?

- 10
- 20
- 23
- 27



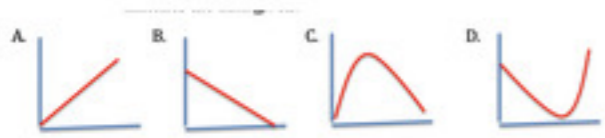
Aaron weighed each of the Chick-fil-a sandwiches that he ate this year before he ate them. He graphed how much each one weighed on the graph above. What weight is the mode of this data set?

- 5
- 185
- 200
- 220

Day	Number of fans
1	150
2	200
3	250
4	300
5	350
6	400
7	450
8	500
9	550
10	500
11	600

**Rock star sensation Mathematica just got an Instagram account. The chart shows the number of fans she has each day. What is the median number of fans Mathematica has?**

- 300
- 375
- 400
- 600



Look back at the data table in the last question. Which of these graphs BEST matches that data?

- A
- B
- C
- D

Frappuccino orders
5
7
3
2
3

A coffee shop recorded how many Frappuccino orders they had for the first 5 hours they were open on day. What is the mean number of Frappuccinos ordered per hour?

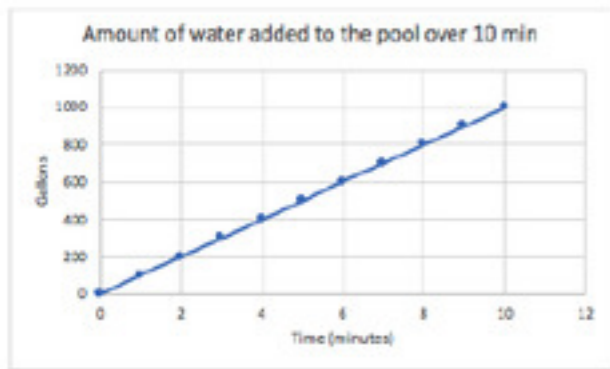
- 4
- 5
- 15
- 20





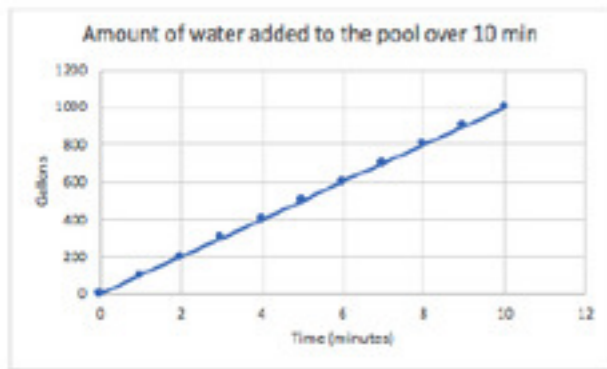
# Quiz

## Section 10



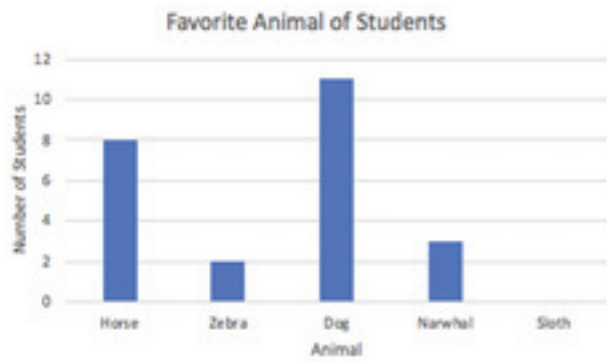
Zach collected data on how long it took to fill his pool at the beginning of the summer and graphed it. How many gallons of water filled the pool per minute?

- 50
- 100
- 150
- 200



He decided to change the scale on the y-axis to 100, 200, 300, 400, etc. How will this affect the line that he graphed?

- The new line will be steeper
- The new line will curve upward
- The new line will be less steep
- The new line will curve downward



There are 30 students in Jamila's class. All of the students chose one of the choices listed in the graph. How many students chose the Sloth as their favorite animal?

- 5
- 6
- 8
- 10

# Open Ended Question

Day	Height (cm)
1	0
2	4
3	5
4	7
5	8
6	10
7	13

It's time to use your answer sheet! Sierra is working on a science project in which she is measuring the height of a plant as it grows over time. She records the height of the plant every day for one week and creates the table here. Make a graph of the information in the table on your answer sheet. Be sure to use the most appropriate type of graph, make up a descriptive graph title, and include axis titles, units and a best fit line. Turn in to your teacher before the timer gets to 0:00. Make sure your name is on the paper!

# Open Ended Question

Yes, we are asking again! Please list your School Name and team member names.  
Don't forget to hit submit to record your answers before the timer gets to 0:00.



# You are Done!

