

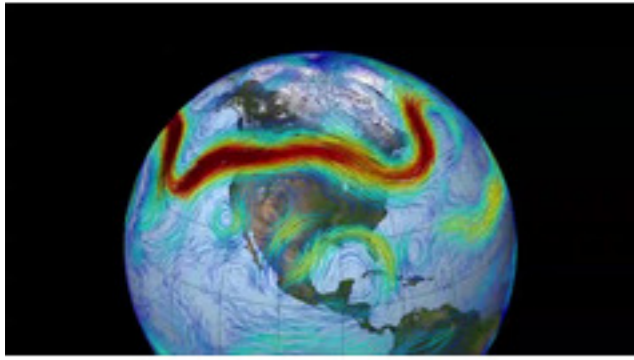
Weather Permitting Practice

T - - -



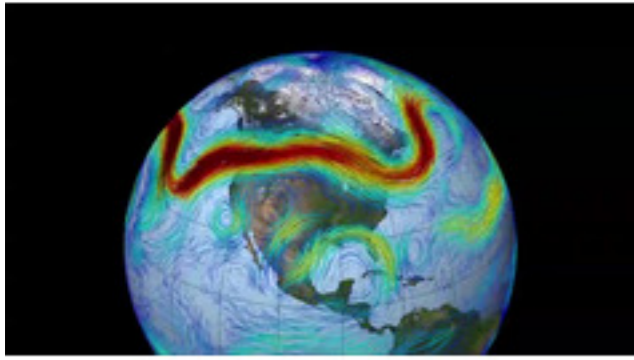
Quiz

Section 1



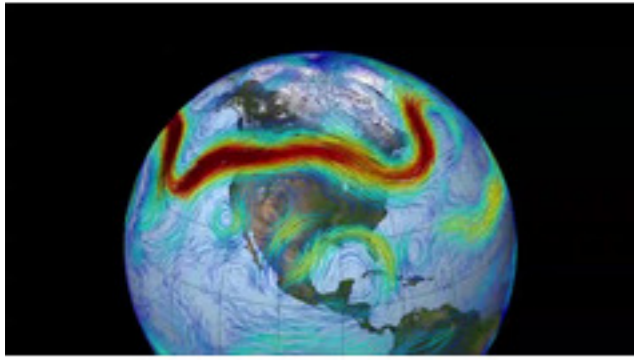
The _____ is a fast flowing river of air found in the atmosphere at around 12km above the surface of the Earth.

- Jet Stream
- Coriolis Effect
- Rip Tide
- Tidal Wind



Because of the effect of the Earth's rotation, the direction in which the jet streams flows is from _____ to _____.

- north to south
- east to west
- west to east
- south to north



A jet stream is an area of air above where two air masses of different _____ converge.

- mass
- weight
- temperature
- volume

True or False: Climate is the total or average weather condition in a certain region over a long period of time.


- True
- False

True or False: Oceans and their currents do not affect the climate of a particular place.

- True
- False

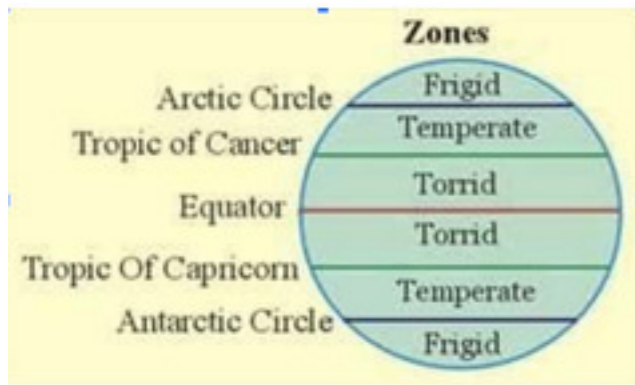
True or False: It gets colder in the winter because the Earth is farther from the Sun.

- True
- False



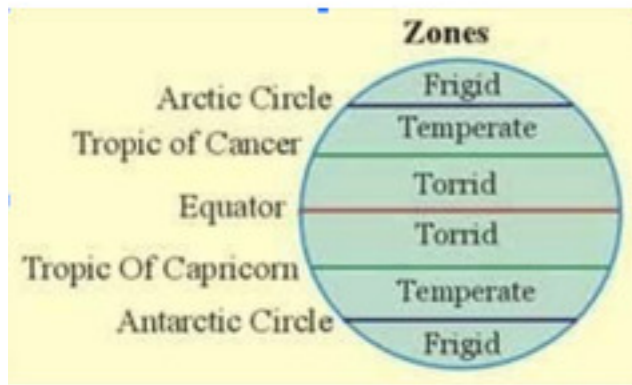
Quiz

Section 2



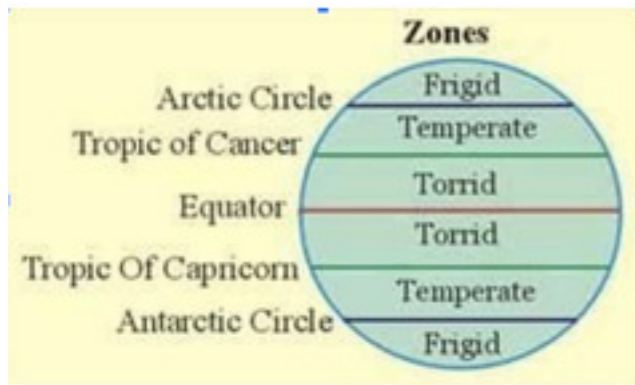
Look at the Zones listed in the diagram. You can click to make it bigger if needed. Which climate zone is typically the warmest?

- Frigid
- Temperate
- Torrid



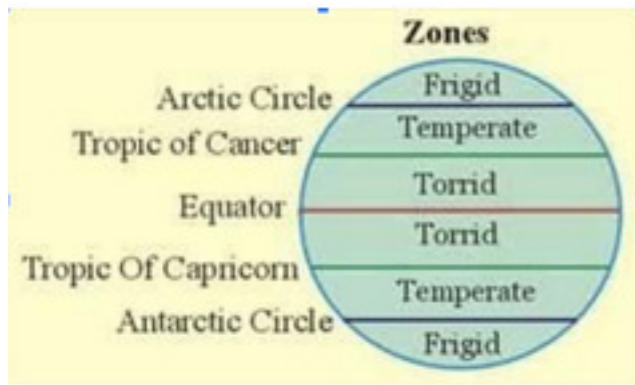
Look at the Zones listed in the diagram. You can click to make it bigger if needed. In which climate zone is North Carolina located?

- Frigid
- Temperate
- Torrid



Look at the Zones listed in the diagram. You can click to make it bigger if needed. In which climate zone is Antarctica located?

- Frigid
- Temperate
- Torrid



Look at the Zones listed in the diagram. You can click to make it bigger if needed. In which zone(s) would you find white snow, ice, and cold weather at least part of the year?

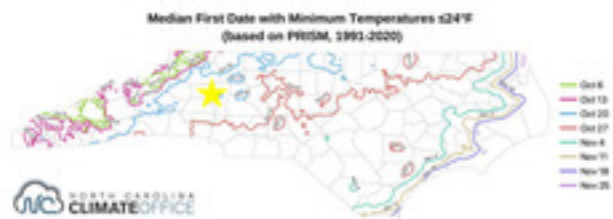
- Frigid
- Temperate
- Torrid
- Torrid and Frigid

True or False. It is warmer in the summer because our side of the Earth is facing the Sun.

- True
- False

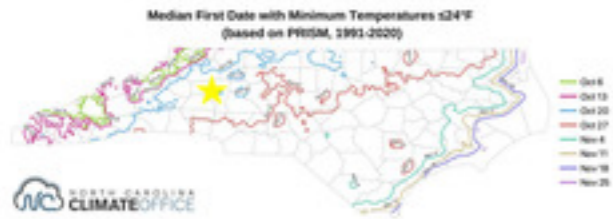
Quiz

Section 3



Click on the image to make it bigger. This is a map from the NC Climate Office connecting when different parts of our state first see temperatures below 24F each year. The area near the star had a temperature below 24 for the first time in 2021 on Nov 17. Was this earlier or later than the average?

- Earlier
- Later

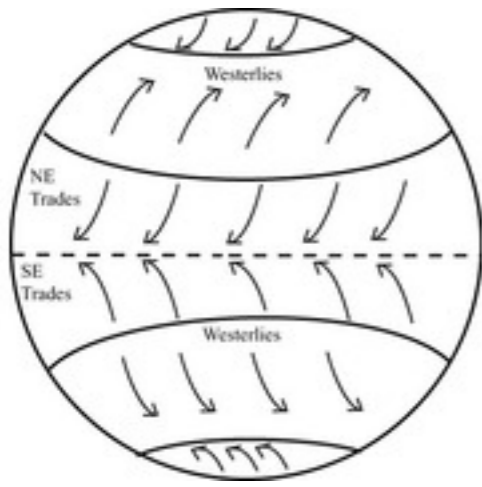


Click on the image to make it bigger. This is a map from the NC Climate Office connecting when different parts of our state first see temperatures below 24F each year. Which of the following statements is TRUE?

- It gets colder in the western part of the state first each fall.
- It gets colder in the eastern part of the state first each fall.

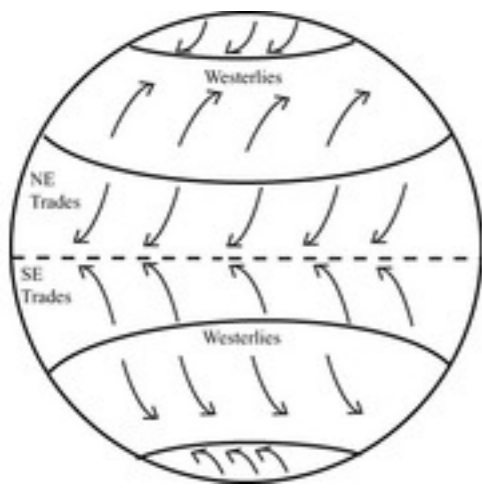
What do we call the regular cycles of weather changes?

- Global warming
- Microclimate
- Seasons
- Climate



Click on the image to make it bigger. This shows global wind patterns. The trade winds meet each other at the equator. What type of pressure is there and what does the warm air do? Source: <http://earthguide.ucsd.edu/virtualmuseum/images/EarthWindZones.html>

- High pressure, warm air sinks
- Low pressure, warm air sink
- High pressure, warm air rises
- Low pressure, warm air rises

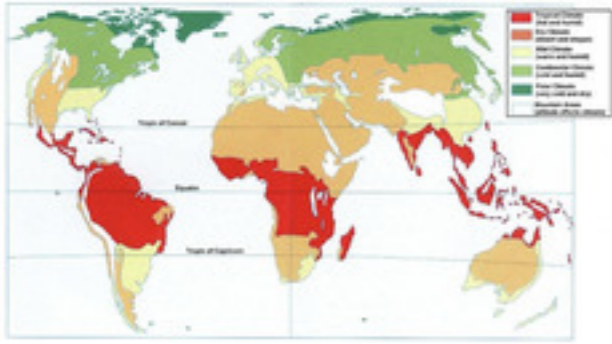


True or False. These wind patterns determine ocean currents.
Source: <http://earthguide.ucsd.edu/virtualmuseum/images/EarthWindZones.html>

- True
- False

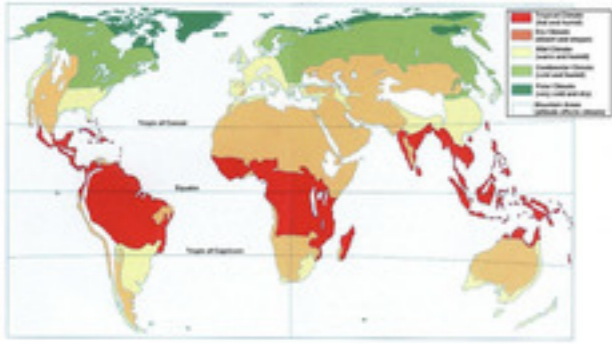
Quiz

Section 4



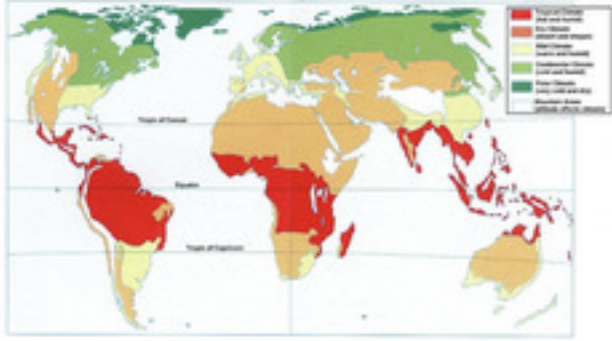
Use the climate map here to answer the following questions. You can click the picture to make it bigger. Which type of climate is only found between the Tropic of Cancer and the Tropic of Capricorn?

- Tropical
- Dry
- Mild
- Continental



Use the climate map here to answer the following questions. You can click the picture to make it bigger. What climate is North Carolina according to this map?

- Tropical
- Dry
- Mild
- Continental

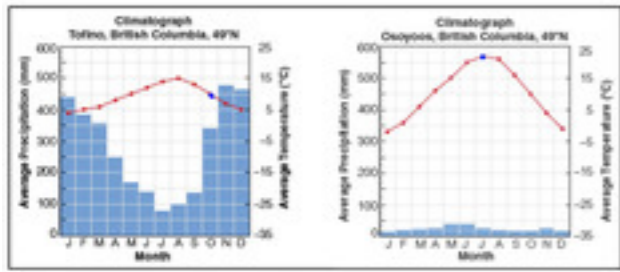


Use the climate map here to answer the following questions. You can click the picture to make it bigger. Where would you find a continental climate?

- below the Tropic of Capricorn
- between the Tropic of Capricorn and the Equator
- between the Equator and Tropic of Cancer
- above the Tropic of Cancer

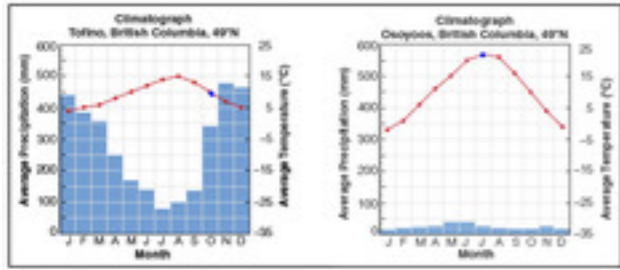
Quiz

Section 5



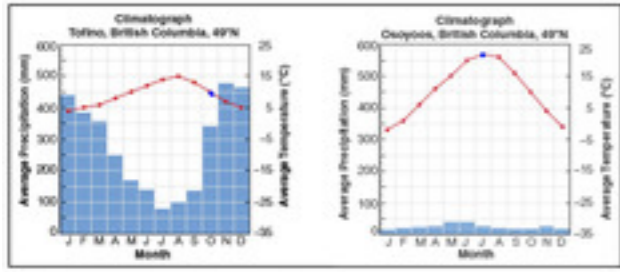
Use the 2 climatographs in this picture to answer the following questions. You can click the picture to make it bigger. What does the horizontal axis of a climatograph show?

- Temperature
- Location
- Precipitation
- Month



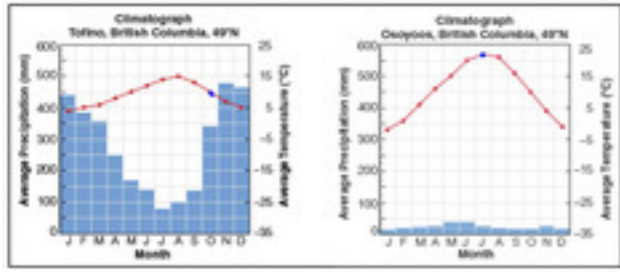
Use the 2 climatographs in this picture to answer the following questions. You can click the picture to make it bigger. What does the line connecting the dots show?

- Temperature
- Location
- Precipitation
- Month



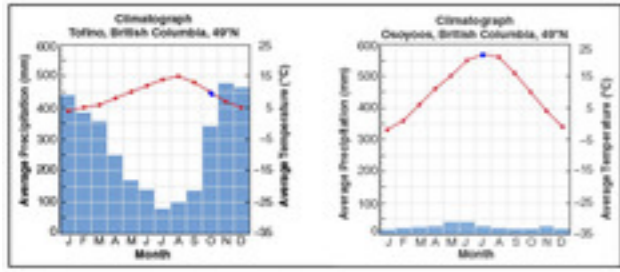
Use the 2 climatographs in this picture to answer the following questions. You can click the picture to make it bigger. What does the line connecting the dots show?

- Temperature
- Location
- Precipitation
- Month




Use the 2 climatographs in this picture to answer the following questions. You can click the picture to make it bigger. What is the average precipitation in Tofino in April?

- 10 mm
- 100 mm
- 250 mm
- 440 mm



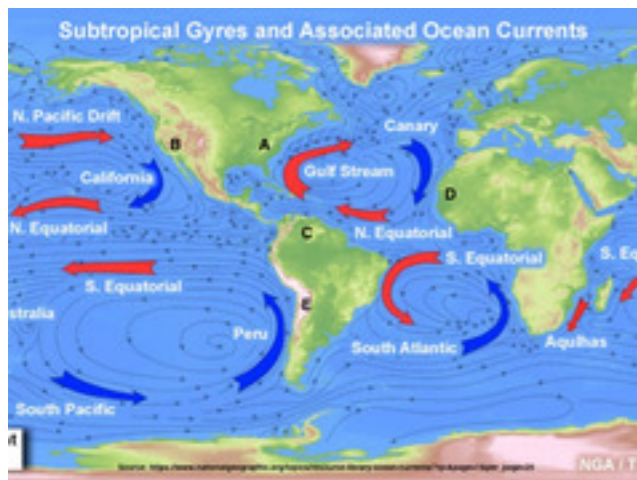
Use the 2 climatographs in this picture to answer the following questions. You can click the picture to make it bigger. Which city has a wetter climate overall?

- Tofino
- Osoyoos



Quiz

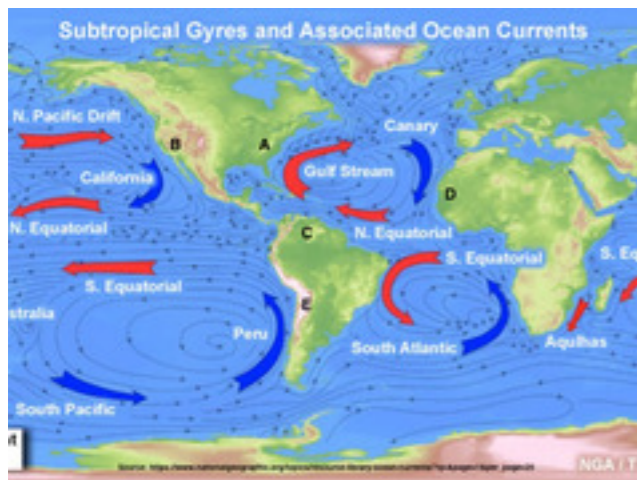
Section 6



Click on the picture to make it bigger. It should the direction and relative temperature for major ocean currents. There are letters showing locations around the world. A & B are on the same latitude and same elevation. Which one will generally be warmer in the summer?

A

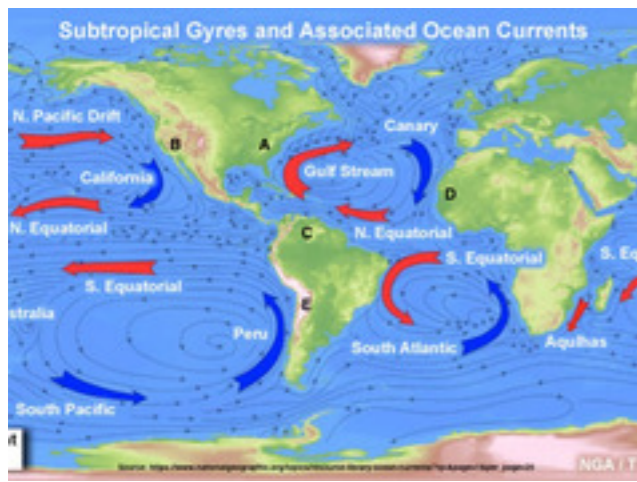
B



Click on the picture to make it bigger. It should the direction and relative temperature for major ocean currents. There are letters showing locations around the world. C & E are on the same longitude, but E is in the mountains and C is at sea level. Which one will generally be warmer in the summer?

C

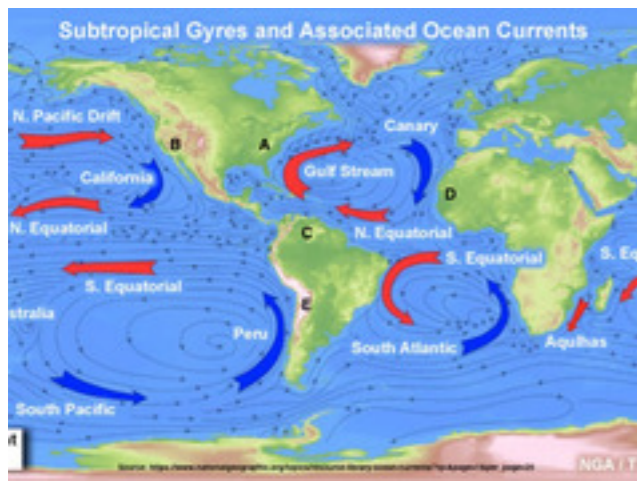
E



Click on the picture to make it bigger. It should the direction and relative temperature for major ocean currents. There are letters showing locations around the world. D & B are on the same elevation. Which one will generally be warmer in the summer?

B

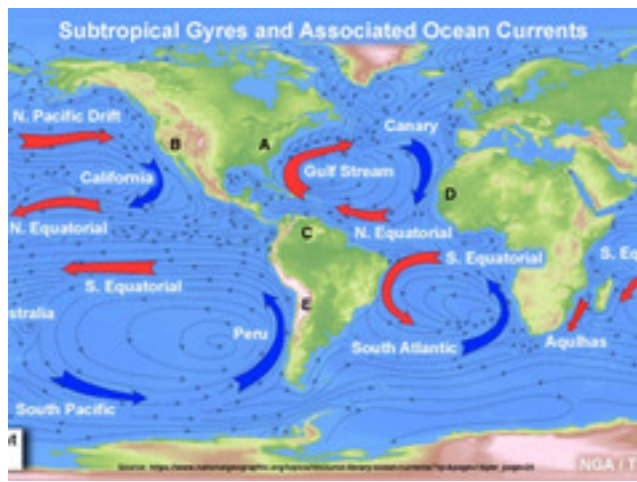
D



Click on the picture to make it bigger. It should the direction and relative temperature for major ocean currents. There are letters showing locations around the world. D & B are on the same elevation. Which one will generally be warmer in the summer?

B

D



Click on the picture to make it bigger. It should the direction and relative temperature for major ocean currents. There are letters showing locations around the world. Which location do you think has the coldest winters?

- A
- B
- C
- D
- E